



# ADDER® RED-PSU PRO

Redundant PSU

19 inch rack mountable power distribution unit with 8 or 16 outputs 12V30W redundant power supply.



## Features

### Power to match your needs

While individual Adder power adapters perform well, as your installation expands and its devices proliferate, separate adapters can become unwieldy and difficult to manage. ADDER® RED-PSU PRO (RED-PSU PRO) provides a significant step up in terms of efficiency, reliability and power management.

### 8 or 16 port power outputs with locking connectors

RED-PSU PRO is available in two variants, offering either 8 or 16 separate, lockable power output ports. Each output is limited to a maximum of 30W at 12V and each uses a locking connector to guard against accidental disconnection.

### Hot swappable power modules

Conversion from the mains AC supply to low voltage DC occurs within either one, or two switched mode 495W power modules, which slot into the rear of the RED-PSU PRO chassis. A single power module is rated at 900,000 hrs MTBF and this can easily meet the needs of sixteen ports. However, in situations where redundancy is required, a second power module can be included in the second module bay. With two power modules fitted, the normal load will be intelligently balanced between them on an equal basis; with full load transferring immediately to one should the other cease operation.

### Protection

Power integrity, safety and management are core components of the RED-PSU PRO system. At start up, RED-PSU PRO enables each of the power outputs in sequence to reduce the instantaneous load on the power modules. After start up each power output is protected by overlapping safety features that guard against excess demand by any connected device.

### Web interface control

RED-PSU PRO can be controlled and monitored via a web interface. Temperature, fan speeds and individual current measurements are viewable and each output can be individually controlled. Web interface security is by HTTP digest authentication (RFC 2617) with username and password as requested information.

### REST API

A REST (Representational State Transfer) API is available with all functionality to which authorized 3rd party control systems can interface.

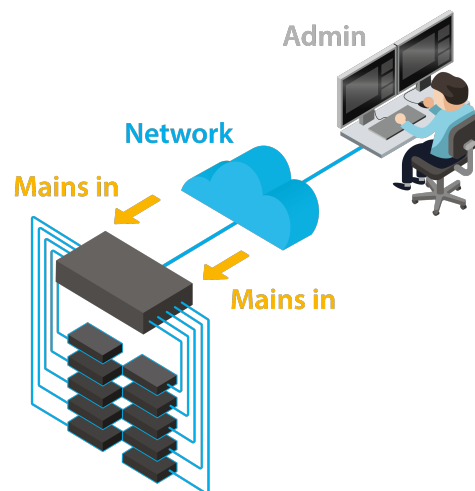
### 12V to 5V converter for 5V products

Many existing Adder devices are powered from 5V supplies. An optional compact converter dongle allows 5V products to be used with the RED-PSU PRO, including the ADDERLink™ INFINITY range.

## Product In Brief

ADDER® RED-PSU PRO provides your installation with the power to grow on demand. Housed within a 1U 19-inch rack mount module, RED-PSU PRO delivers up to 16 power 12VDC outputs, hot swappable power modules and remote management.

- 8 or 16 port independently controllable
- 12V outputs
- 2 hot swappable power modules
- Controllable via secure HTTP interface
- REST API for 3rd party control integration
- 900,000hrs MTBF ratings on power modules
- 12V to 5V cable converters available for units with 5V power feeds



## Technical Specifications

### Mains inputs

- 2x IEC 90-264VAC 47/63Hz input
- Efficiency 94% @50% load
- Power Factor 0.9 MIN typical

### Peripheral connections

- 1x 8p8c for 10/100 Ethernet connection

### Power

- 8 or 16x locking 3-pin DC connector, 12VDC 30W output
- Each output is a Limited Power Source Service (LPS) to IEC 60950-1

### Physical design

#### Compact case, robust metal construction

- Designed for 19 inch rack mounting
- (W)435mm/17.13" x (H)44mm/1.73" x (D)275mm/10.8"
- Weight: 4.5kg/9.9lbs

### Operating conditions

- Temperature 0 to 50°C/32 to 122°F
- Humidity 10–95% Non condensing
- Altitude <2000Meters / 6500ft

### Mean time between failure (MTBF)

- PSU-REDPRO(x)-8 = 1,000,000hrs
- PSU-REDPRO(x)-16 = 600,000hrs  
(Both units tested at 55°C ambient, 50% electrical stress, Telcordia SR-332 Issue 4)

- PSU-REDPRO-495W = 900,000hrs  
(Unit tested at 55°C ambient, 80% lout max, Telecordia Issue 3 Method 1 Case 3)

### Local client requirements

#### Browser versions

- Internet Explorer™ 10,11
- Firefox™ 24 ESR and above
- Chrome™ 44 or above

### Approvals

- CE/UKCA/FCC/ICES/cULus
- RCM

### Standards

- IEC/EN/UL 62368-1, EN55032, EN55035, EN61000-3-2, EN61000-3-3, CFR47 pt15a

### Compliance

- REACH/RoHS/CAL PROP 65



ADDER RED PSU PRO - Front



ADDER RED PSU PRO - Back

## Ordering Information

### Redundant power supply units:

(Pre-fitted with two removable power supplies)

**PSU-REDPRO2-8-XX:** 8-port power supply system\*

**PSU-REDPRO2-16-XX:** 16-port power supply system\*

### Power supply units:

(Pre-fitted with one removable power supply)

**PSU-REDPRO1-8-XX:** 8-port power supply\*

**PSU-REDPRO1-16-XX:** 16-port power supply

\*standard rack mount ears included

## What's in the Box?

**1x** RED-PSU PRO unit

(To the specification in the ordering information)

**1x** country specific power cable

**1x** quick start guide

### Accessories (Sold Separately)

**VSC48:** 2m/6.5ft 3-pin locking to 3-pin locking power lead

**PSU-RPS-5V:** 3m/9.8ft 12V to 5V converter power adaptor

**RMK4D-R2:** Rack mount bracket with holder for power adaptor (PSU-RPS-5V)

**PSU-REDPRO-495W:** Additional 495W power module

## About Adder

Adder is a leading developer and thought leader in connectivity solutions. Adder's advanced range of KVM switches, extenders and IP solutions enable the control of local, remote and global IT systems across the enterprise. The company distributes its products in more than 60 countries through a network of distributors, resellers and OEMs.

Adder has offices in China, Germany, Japan, the Netherlands, Singapore, Spain, France, Sweden, United Kingdom and United States.

To find out more, visit: [adder.com](http://adder.com)

#### Global Headquarters

Tel: +44 (0)1954 780044 | Fax: +44 (0)1954 780081  
Email: [sales@adder.com](mailto:sales@adder.com)

#### Americas

Tel: +1 888 932 3337 | Fax: +1 888 275 1117  
Email: [usasales@adder.com](mailto:usasales@adder.com)

#### Asia Pacific

Tel: +65 6288 5767 | Fax: +65 6284 1150  
Email: [asiasales@adder.com](mailto:asiasales@adder.com)

All brand names and trademarks are the property of their respective owner. Copyright 2021 | Adder Technology Ltd. | ADDER\_DS092\_EN\_v11\_FINAL

Information contained in this data sheet is up-to-date and correct as at the date of issue. As Adder Technology cannot control or anticipate the conditions under which this product may be used, each user should review the information in the specific context of planned use. Images are for illustrative purposes only.

**ADDER**<sup>®</sup>  
THE IP KVM PEOPLE

 DATA SHEET